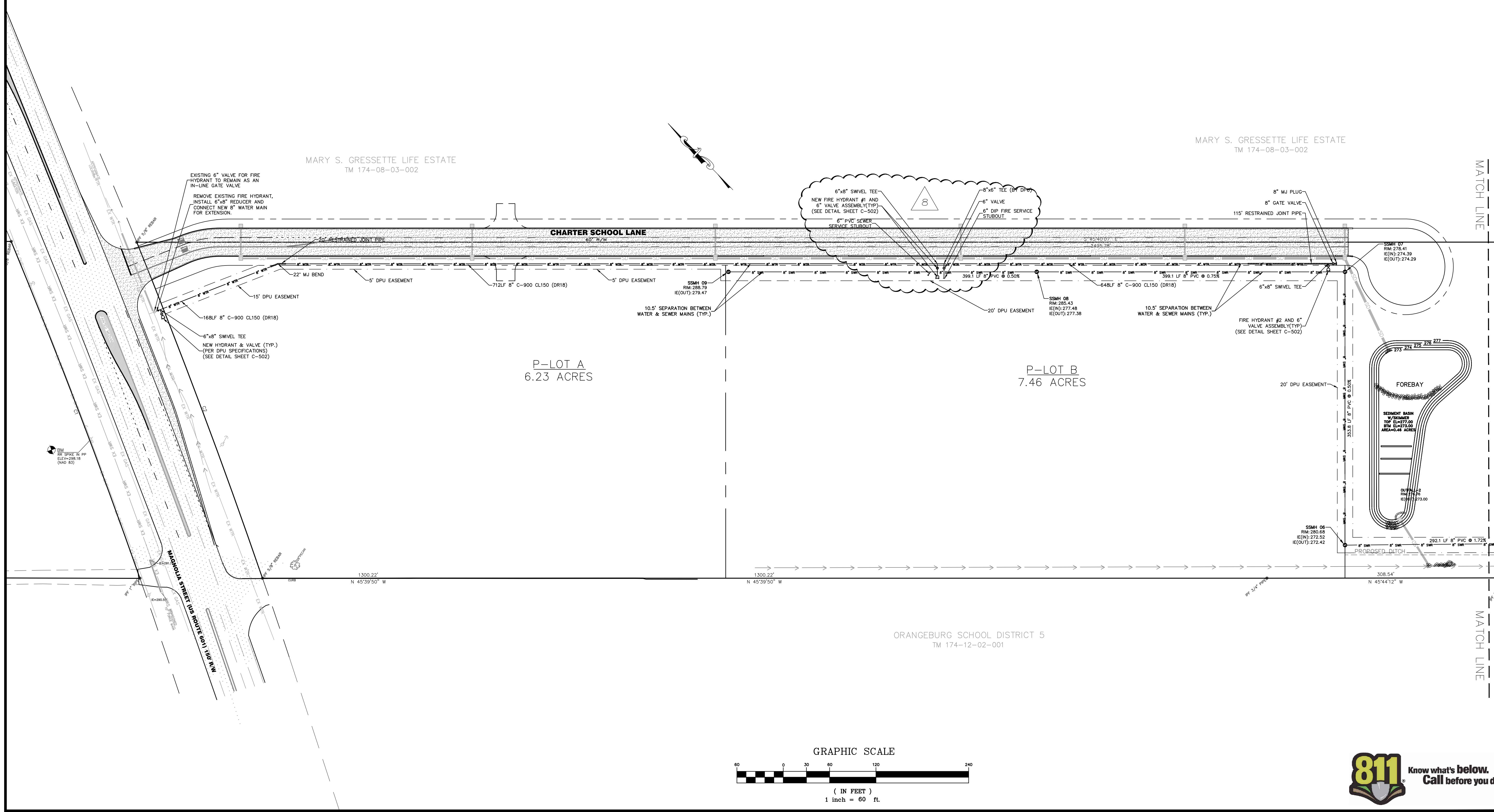


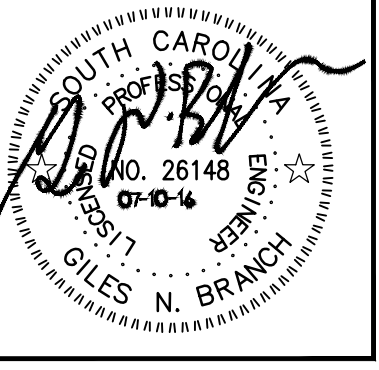
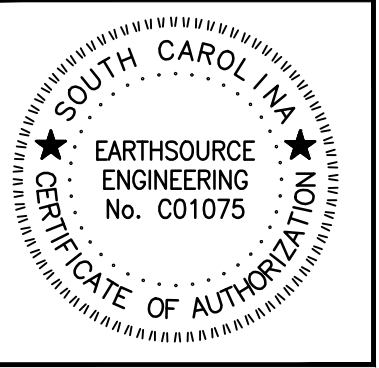
- SPECIAL UTILITY NOTES**
1. FIRE HYDRANTS TO BE PLACED AT EDGE OF ROW.
 2. ALL WATER FITTINGS TO BE RESTAINED USING EBAA MEGALUGS

CURVE TABLE				
CURVE	LENGTH	RADIUS	DELTA	ARC CHORD BEARING
C1	466.39	8519.37	37°38'28"	S 23°24'42" W
C2	464.39	8669.37	37°4'10"	N 23°49'29" E



EARTHSOURCE
ENGINEERING
CIVIL ENGINEERING | SITE PLANNING
LANDSCAPE DESIGN | LEED DESIGN

886 Johnnie Dodds Boulevard Suite 200
Mt. Pleasant, SC 29464
Office: 843.881.0625
Fax: 843.881.2477
www.earthsourceeng.com
branch@earthsourceeng.com

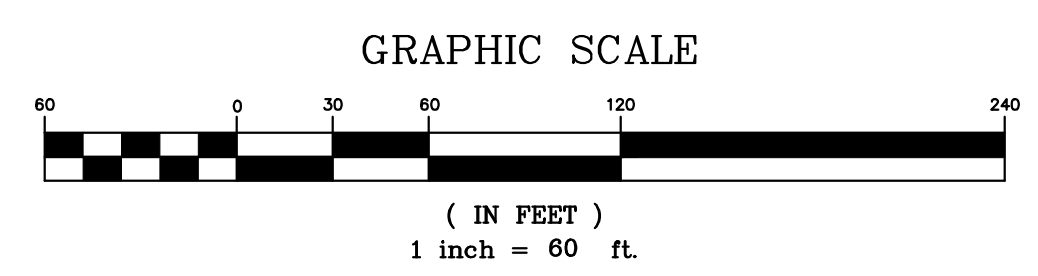


CHARTER SCHOOL ROAD & UTILITIES
ORANGEBURG, SC
JUNY 601
UTILITY PLAN

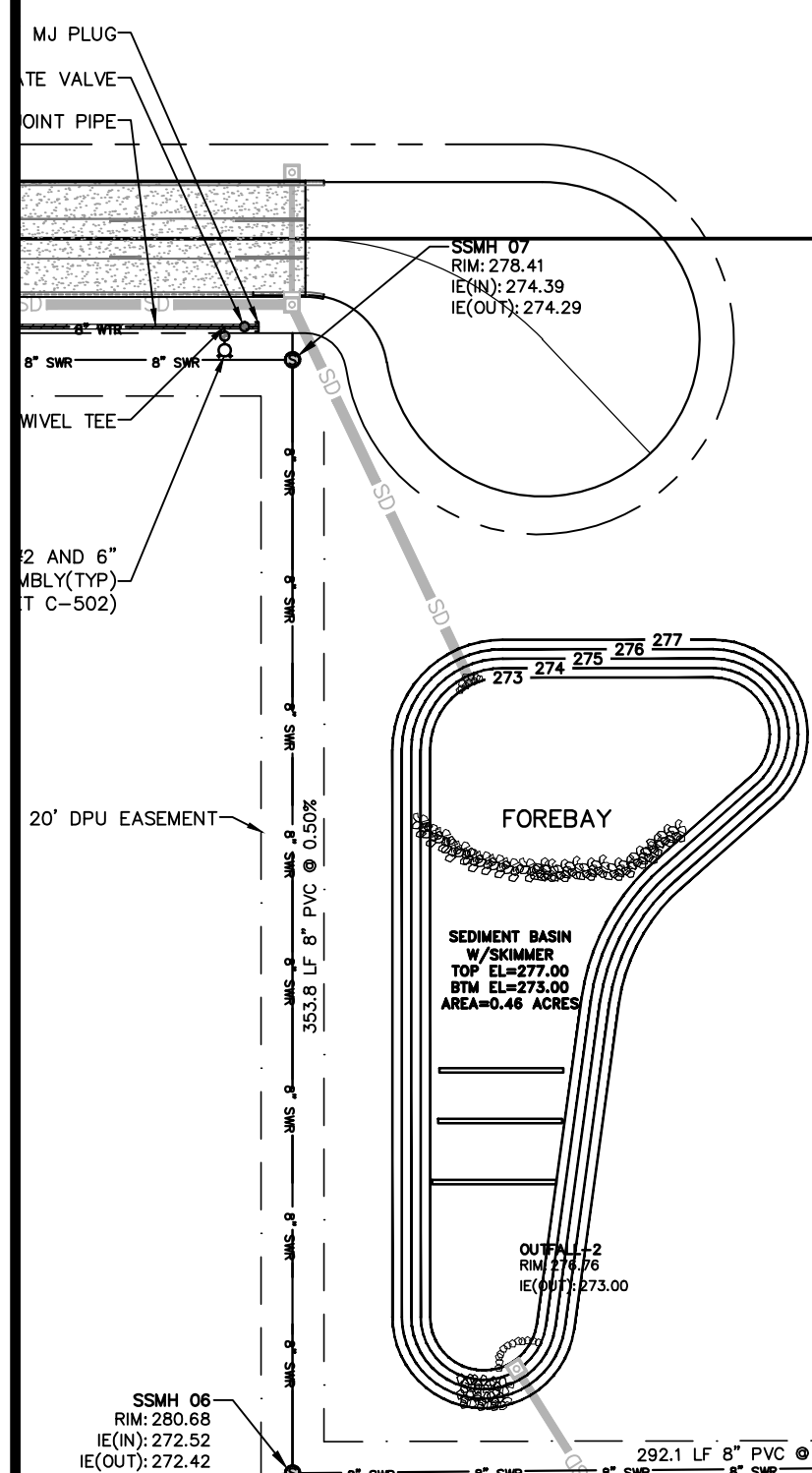
NO.	DATE	REVISIONS
1.	04.15.15	PER SCOOT COMMENTS
2.	05.14.15	PER SCOOT COMMENTS
3.	06.04.15	PER SCOOT COMMENTS
4.	10.01.15	PER CHANGE IN ROAD LOCATION
5.	11.11.15	PER DPU COMMENTS
6.	11.14.15	PER OWNER ROAD SHIFT
7.	01.29.16	PER FINAL ENGINEER REVIEW
8.	05.13.16	PER UPDATE TO UTILITY PLAN
9.	07.10.16	PER SCOOT DISTRICT OWNER

DRAWN: JWO
CHECKED: GNB
DATE: 10.01.14
JOB NO. 14-177

PERMIT REVIEW SET
SHEET NUMBER C-400



MARY S. GRESSETTE LIFE ESTATE
TM 174-08-03-002



MATCH LINE

MATCH LINE

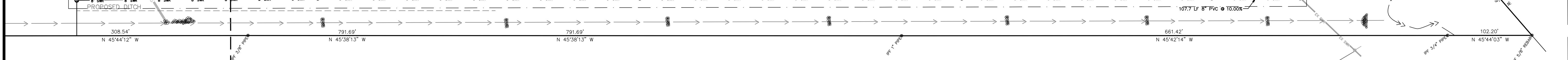
MARY S. GRESSETTE LIFE ESTATE
TM 174-08-03-002

P-LOT C
10.88 ACRES

MARY S. GRESSETTE LIFE ESTATE
TM 174-08-03-002

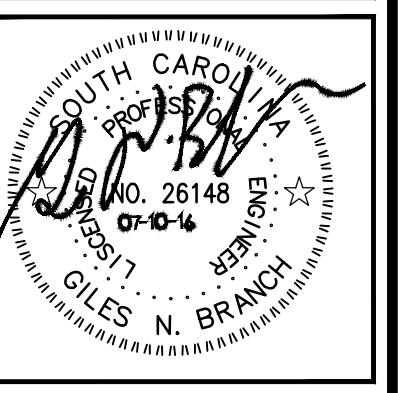
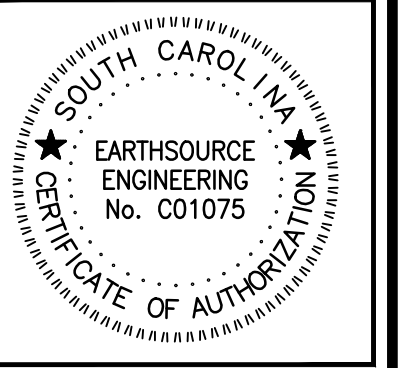
TELECOM TOWER MIDATLANTIC
TM 181-09-00-001

ORANGEBURG SCHOOL DISTRICT 5
TM 174-12-02-001



AVIANN REAL ESTATE HOLDINGS, LLC
TM 181-10-01-001

EARTHSOURCE
ENGINEERING
CIVIL ENGINEERING | SITE PLANNING | LANDSCAPE DESIGN | LEED DESIGN
886 Johnnie Dodds Boulevard Suite 200
Mt. Pleasant, SC 29464
www.earthsourceeng.com
branching@earthsourceeng.com

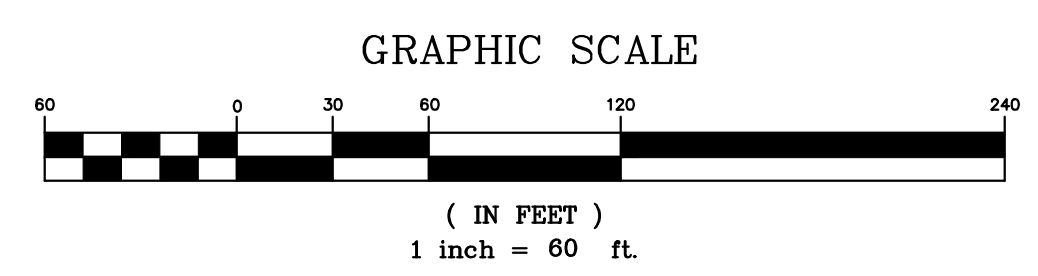


CHARTER SCHOOL ROAD & UTILITIES
AVIANN REAL ESTATE HOLDINGS, LLC
ORANGEBURG, SC
UTILITY PLAN

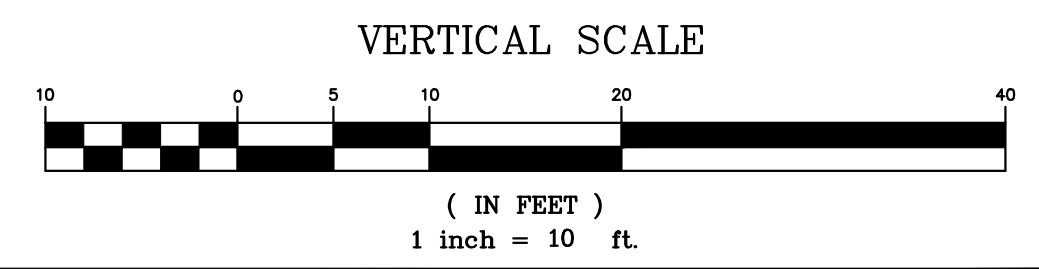
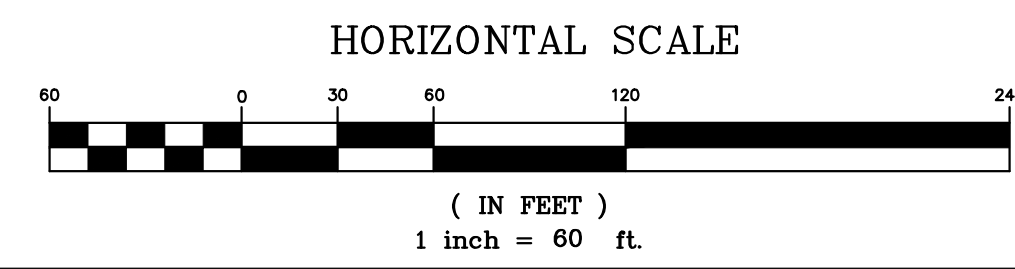
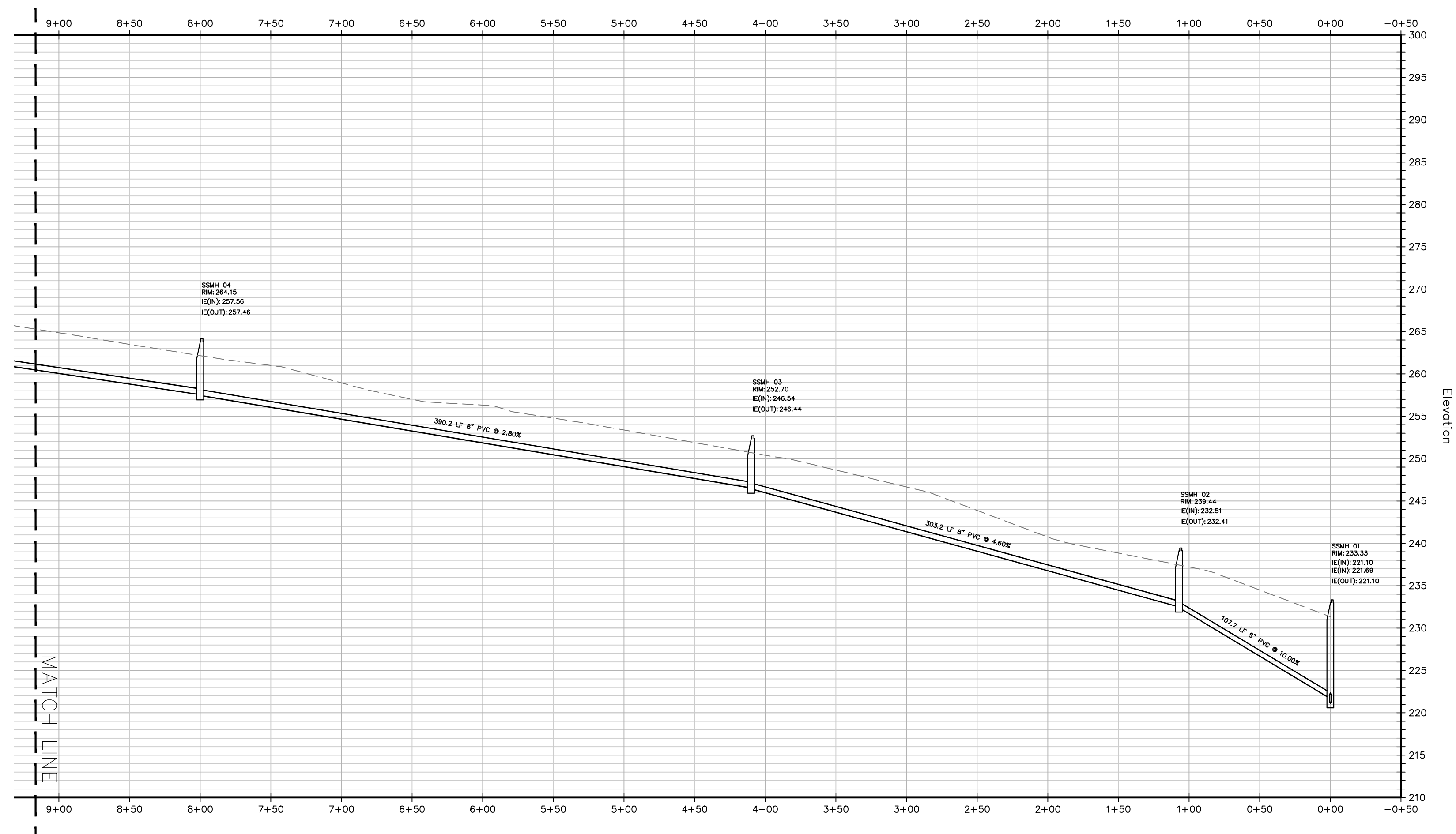
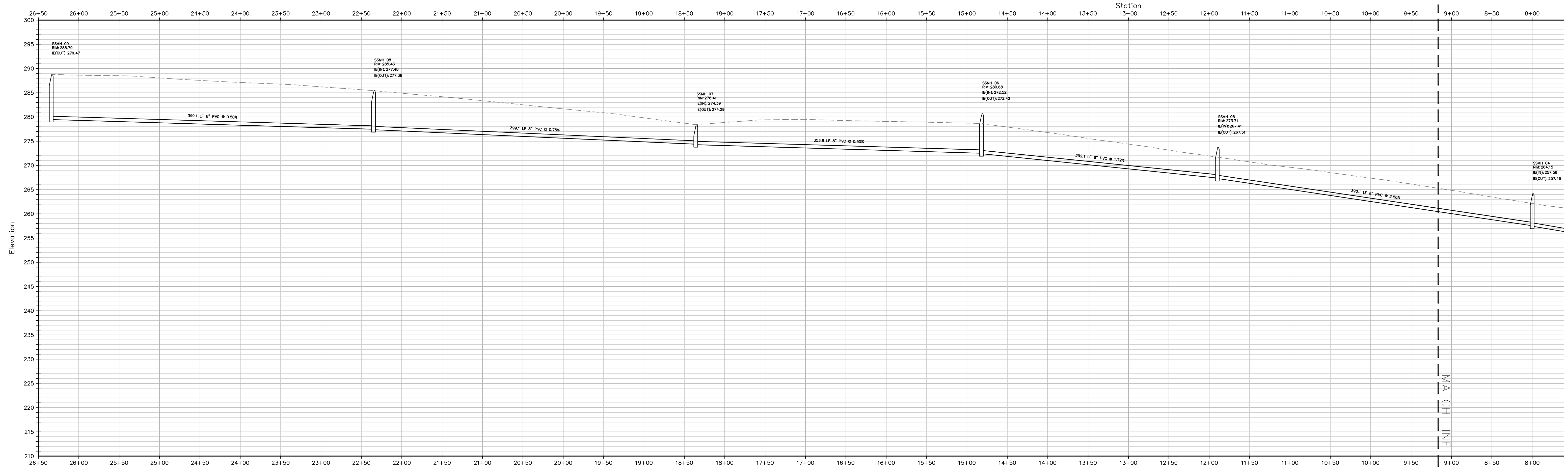
REVISIONS	
NO.	DATE
1.	04.15.15
2.	05.14.15
3.	06.04.15
4.	10.01.15
5.	11.11.15
6.	01.29.16
7.	05.13.16
8.	07.10.16
9.	

DRAWN: JWO
CHECKED: GNB
DATE: 10.01.14
JOB NO. 14-177

PERMIT REVIEW SET
SHEET NUMBER
C-401



PROFILE VIEW OF SEWER



EARTHSOURCE
ENGINEERING
CIVIL ENGINEERING | SITE PLANNING
LANDSCAPE DESIGN | LEED DESIGN

Office: 643.881.0625
branching@earthsourceeng.com
www.earthsourceeng.com

886 Johnnie Dodds Boulevard Suite 200
Mt. Pleasant, SC 29464

SOUTH CAROLINA
ENGINEERING
No. C01075

SOUTH CAROLINA
PROFESSIONAL
No. 26148
07-10-14
GLENN N. BRANCH

**CHARTER SCHOOL
ROAD & UTILITIES**
HWY 601
ORANGEBURG, SC

SEWER PROFILES

REVISIONS	
NO.	DATE
1.	04.15.15
2.	05.14.15
3.	06.04.15
4.	10.01.15
5.	11.11.15
6.	11.14.15
7.	01.29.16
8.	05.13.16
9.	07.10.16

DRAWN: JWO
CHECKED: GNB
DATE: 10.01.14
JOB NO. 14-177

**PERMIT
REVIEW SET**
SHEET NUMBER
C-402